



طراحی و شبیه سازی لنز دو کانونه بر اساس فراسطوح دی الکتریک

محمد مهدی شانهی^۱ و مهدیه هاشمی^۲

^۱ گروه نانو مواد - دانشکده فنی و مهندسی - دانشگاه تربیت مدرس - ایران

^۲ گروه فیزیک - دانشکده علوم پایه - دانشگاه فسا - ایران

چکیده - در این پژوهش به طراحی و شبیه سازی یک لنز تک و دو کانونه با استفاده از فراسطوح در طول موج ۷۰۰ نانومتر پرداخته ایم. فراسطوح شکل دو بعدی فرامواد حجیم می باشند که از مجموعه ای از تشدیدگرها تشکیل شده اند. برای کاهش تلفات تابشی در فراسطح و همچنین افزایش بازده لنز طراحی شده از تشدیدگر دی الکتریک سیلیکون [۱] در طول موج ۷۰۰ نانومتر استفاده گردید. در این نوع فراسطوح تحریک تشدیدها بر اساس جریان های جابجایی انجام می گردد. در پایان برای دستیابی به دو ناحیه کانونی یک مدولاسیون فاز روی چیدمان تشدیدگرها اعمال گردید.

کلید واژه - تشدیدگر دی الکتریک، فراسطوح، فرالنز دو کانونه، مدولاسیون فاز

Design and Simulation of a Bifocal lens based on Dielectric Metasurface

Mohammad Mahdi Shanei¹, Mahdiah Hashemi²

¹ Nanomaterials Group, Department of Materials Engineering, Tarbiat Modares University (TMU), P.O. Box 14115-143, Tehran, Iran, m.shanei@modares.ac.ir

² Department of Physics, College of Science, Fasa University, Fasa 74617-81189, Iran, mahdiah.hashemi@gmail.com

Abstract- In this paper, we design and simulate a single and a bifocal lens at the wavelength of 700 nm. Metasurfaces are 2-D form of bulky metamaterials which consist of an array of resonators. To reduce the radiative loss and enhancement of efficiency, we take advantage of dielectric resonators such as Silicon. In these constitutions, the resonance modes excited by means of displacement currents. Finally, to focus the incident light at two different areas, a phase modulation has been applied on the arrangement of resonators.

Keywords: Dielectric resonator, Metasurface, Bifocal lens, Phase Modulation

1. Introduction

Optical metasurfaces are two-dimensional form of metamaterials composed of metal or dielectric subwavelength resonators. These ultra-thin flat surfaces manipulate the wave front by local controlling of the phase, amplitude and polarization with subwavelength spatial resolution [1]. Nowadays, unlike the metallic metasurfaces, the dielectric counterparts have been gained remarkable attention due to their low loss nature at the visible and infrared frequencies. The flat nature of high efficient metasurfaces open up new possibilities for integration of optical chips [2].

It has been demonstrated that Silicon metaatoms as a constitutional element enhance the efficiency of metasurfaces at infrared wavelengths and can be fabricated in one lithographic step. In addition, it is appreciably compatible with the complementary metal oxide semiconductor (CMOS) [3, 4]. The main challenge of designing a high-performance metasurface for any application is providing 2π phase shifts by means of metaatoms. Silicon with high refractive index support different order of electric and magnetic Mie-type resonances in the optical spectral range. The spectral position of these localized resonances can be tuned by adjustment of resonator geometrical dimensions. More importantly, an overlapping between the first order of electric and magnetic resonances, Kerker condition, could be achieved by fine-tuning of metaatom dimensions. The overlapping of resonance modes results to a 2π phase shift together with near unit amplitude of transmitted wave through metaatoms [5–8].

In current study, we design and simulate a bifocal dielectric metalens by means of C-shaped Silicon metaatoms at the wavelength of 700 nm.

2. Structure

Schematic diagram of the unit cell is depicted in Fig1. The designed silicon metaatoms are placed on a silica layer. The metasurface are illuminated by the y-polarized incident light from the substrate

side and the transmitted light will be investigated at free space. In this study, all simulations are performed by full wave analysis considering finite difference time domain method and the dielectric constant of silica and silicon are extracted from [9]. The periodicity of unit cell is set to be $P=360$ nm and the thickness of C-shaped resonator is considered $t=200$ nm. The opening angle, inner and outer radius of the C-shaped metaatoms are denoted by α , R_i and R_o in Figs. 1(a), 1(b) and 1(c). The distribution of phase and amplitude of y-component of transmitted electric field, through the C-shape metaatoms with a sweep over the geometrical parameters of R_i and α and with fixed values of $R_o=140$ nm, $t=200$ nm and $P=360$ nm at $\lambda = 700$ nm are plotted in Fig. 1(d). The applied sweeps over R_i and α are considered between the values of 0 to 135 nm and 0 to 160° , respectively.

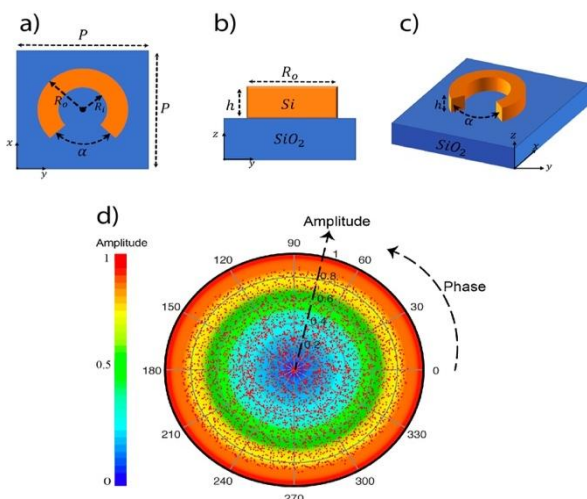


Fig. 1: (a) Top, (b) cross-sectional and (c) 3D view of unit cell. (d) The distribution of the phase and amplitude of transmitted light through C-shaped metaatoms as function of R_i and α .

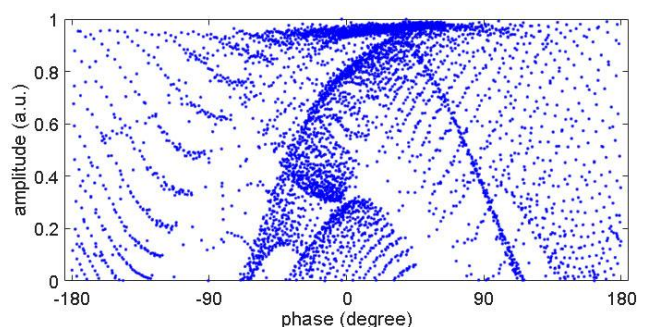


Fig. 2: The distribution of the phase and amplitude of transmitted light through C-shaped metaatoms as function of R_i and α .

To clarify the amplitude and phase coverage of the different geometries of metaatoms we added Fig. 2. Fig. 3 shows the transmittance spectra of a unit cell with the fixed values of $R_0=140$ nm, $t=200$ nm, $P=360$ nm, $R_0=85$ nm and $\alpha=25$ at $\lambda = 700$ nm. Two resonance dips are observed at transmittance spectra at $\lambda_1=815$ nm and $\lambda_2=880$ nm. To clarify the source of these resonance modes, the enhancement of electric and magnetic field has been studied. The insets in Fig. 3 reveal the excitation of magnetic dipole at λ_1 and electric dipole at λ_2 .

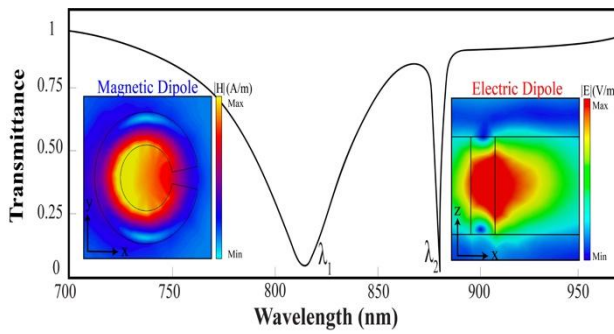


Fig. 3: Transmittance spectra of unit cell considering $R_0=140$ nm, $t=200$ nm, $P=360$ nm, $R_0=85$ nm and $\alpha=25$ at $\lambda = 700$ nm. The insets show the excitation of magnetic dipole in x-y plane and electric dipole in x-z plane at λ_1 and λ_2 , respectively.

3. Lens Design

To focus the incident plane wave, a phase profile similar to that of the conventional spherical lenses should be applied to the wave. To achieve such phase distribution, the relation between the rotational angle ϕ and the center of each CSRR should be governed by

$$\phi(r) = \frac{2\pi}{\lambda} (\sqrt{r^2 + f^2} - f), \quad (1)$$

where f is the focal length, λ is the wavelength in the medium which light focuses (here, the silicon substrate with $\lambda = \lambda_0/n_{Si}$) and $\sqrt{r^2 + f^2}$ denotes the distance between the C-shaped metaatoms and the focal point. A schematic of the meta-atoms arrangement along the x axis with the applied boundary conditions that surround the structure is plotted in Fig. 4. The structure is terminated by

perfectly matched layers (PMLs) in the x direction and repeats itself along the y axis. Incident light illuminates the structure normally, in the z direction, with E_y -polarized electric field.

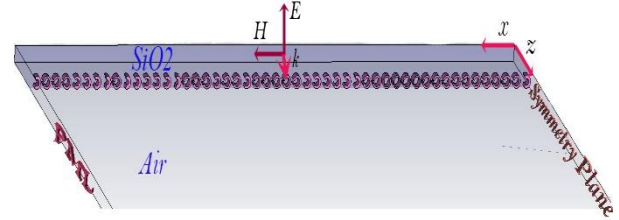


Fig. 4 Schematic design for AFA beam generation and the applied boundary conditions. Incident y-polarized light is propagating along the z axis.

To design a bifocal lens with two focal points at f_1 and f_2 , with the correspond amplitudes of a_1 and a_2 have been considered. According to the Eq. (2) the proper metaatom, which has the nearest amplitude and phase to the $a(x)$ and $\phi(x)$, should be set at position x .

$$a(x)e^{i\phi(x)} = a_1 e^{-i\frac{2\pi}{\lambda}(\sqrt{x^2+f_1^2}-f_1)} + a_2 e^{-i\frac{2\pi}{\lambda}(\sqrt{x^2+f_2^2}-f_2)}. \quad (2)$$

Fig. 5 shows the FEM-based simulation of the lens performance. The field distribution of metalens with focal point of 15λ is shown in Fig. 5(a). Fig. 5(b) illustrates the electric field distribution of a bifocal lens. The focal points are set to be at $f_1=10\lambda$ and $f_2=15\lambda$.

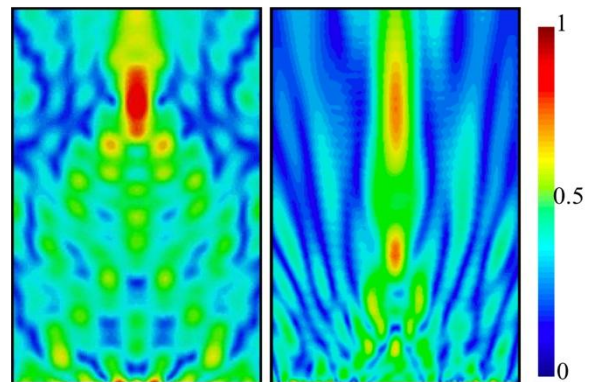


Fig. 5 The field distribution of y-component of electric field for a metalens with (a) the focal point at $f=10\lambda$ and (b) two focal area at $f_1=10\lambda$ and $f_2=15\lambda$.

4. Conclusion

Considering the phase discontinuity in the transmitted light through c-shape ring resonators, we designed a bifocal metalens. Our proposed metalens consists of a one-dimensional arrangement of metaatoms. We showed that our designed bifocal metalens works properly at the wavelength of 700 nm. Following this approach constitutes an effective step toward designing photonic devices in the visible frequency range. In addition, designing efficient multi focal lens provides a new possibility for bio applications and different type of spectroscopies.

References

- [1] A. Komar, R. Paniagua-Domínguez, A. Miroshnichenko, Y. F. Yu, Y. S. Kivshar, A. I. Kuznetsov, and D. Neshev, "Dynamic beam switching by liquid crystal tunable dielectric metasurfaces," *ACS Photonics*, Vol. 5, pp. 1742–1748, 2018.
- [2] M. C. Sherrott, P. W. Hon, K. T. Fountaine, J. C. Garcia, S. M. Ponti, V. W. Brar, L. A. Sweatlock, and H. A. Atwater, "Experimental demonstration of 230 phase modulation in gate-tunable graphene–gold reconfigurable mid-infrared metasurfaces," *Nano letters*, Vol. 17, pp. 3027–3034, 2017.
- [3] M. I. Shalaev, J. Sun, A. Tsukernik, A. Pandey, K. Nikolskiy, and N. M. Litchinitser, "High-efficiency all-dielectric metasurfaces for ultracompact beam manipulation in transmission mode," *Nano letters*, Vol. 15, pp. 6261–6266, 2015.
- [4] I. Staude, A. E. Miroshnichenko, M. Decker, N. T. Fofang, S. Liu, E. Gonzales, J. Dominguez, T. S. Luk, D. N. Neshev, I. Brener *et al.*, "Tailoring directional scattering through magnetic and electric resonances in subwavelength silicon nanodisks," *ACS nano*, Vol. 7, pp. 7824–7832, 2013.
- [5] M. M. Shanei, M. Hashemi, D. Fathi, and C. J. Zapata-Rodríguez, "Dielectric metalenses with engineered point spread function," *Appl. Optics*, Vol 56, pp. 8917–8923, 2017.
- [6] S. M. Kamali, E. Arbabi, A. Arbabi, Y. Horie, and A. Faraon, "Highly tunable elastic dielectric metasurface lenses," *Laser & Photonics Rev.* Vol 10, pp. 1002–1008, 2016.
- [7] X. Chen, J. Gao, and B. Kang, "Achieving a tunable metasurface based on a structurally reconfigurable array using sma," *Opt. express*, Vol. 26, pp. 4300–4308, 2018.
- [8] M. Khorasaninejad, Z. Shi, A. Y. Zhu, W.-T. Chen, V. Sanjeev, A. Zaidi, and F. Capasso, "Achromatic metalens over 60 nm bandwidth in the visible and metalens with reverse chromatic dispersion," *Nano letters*, Vol. 17, pp. 1819–1824, 2017.
- [9] J. Barth, R. Johnson, M. Cardona, and E. Palik, *Optical constants of solids ii*, Acad. Press. New York (1991).